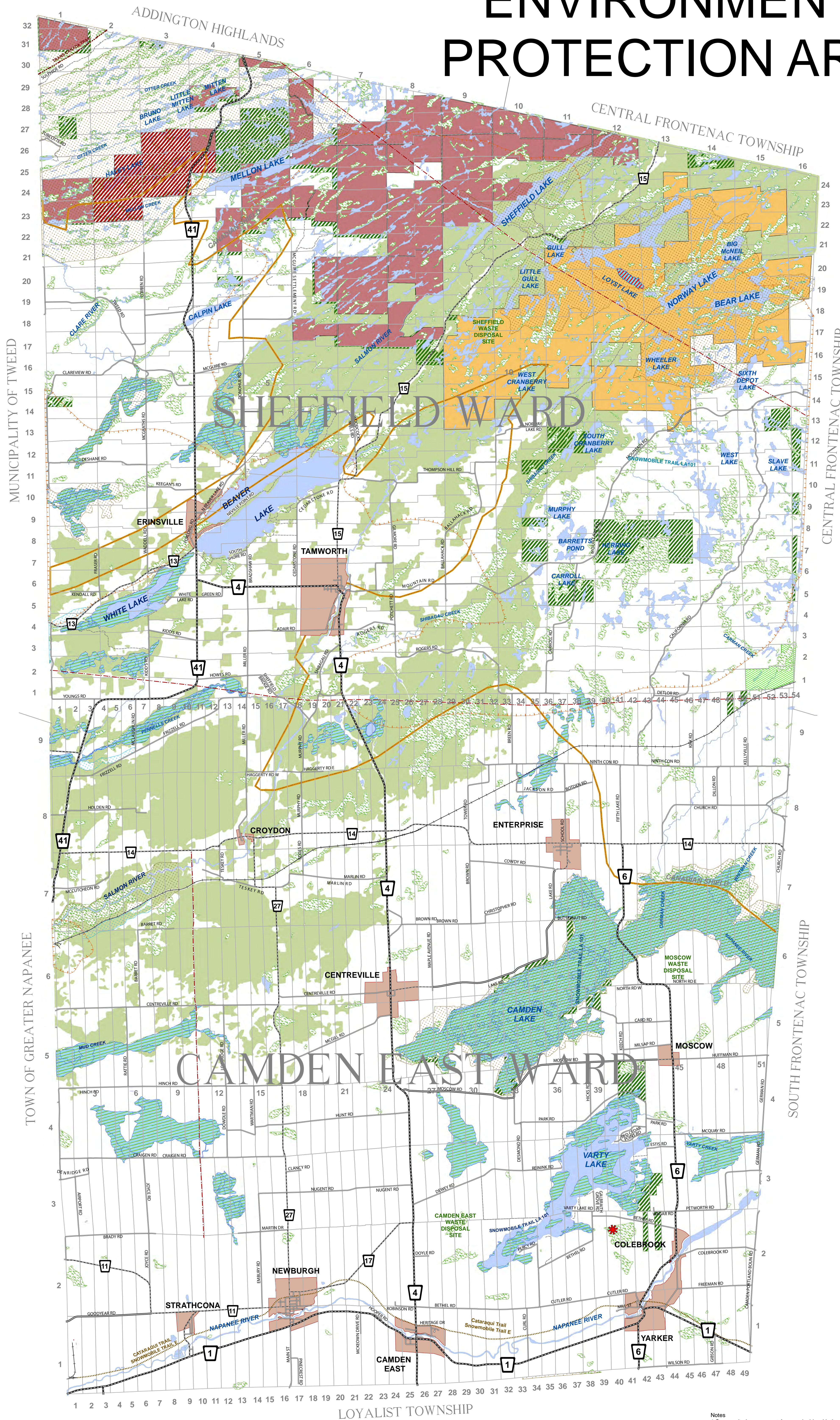
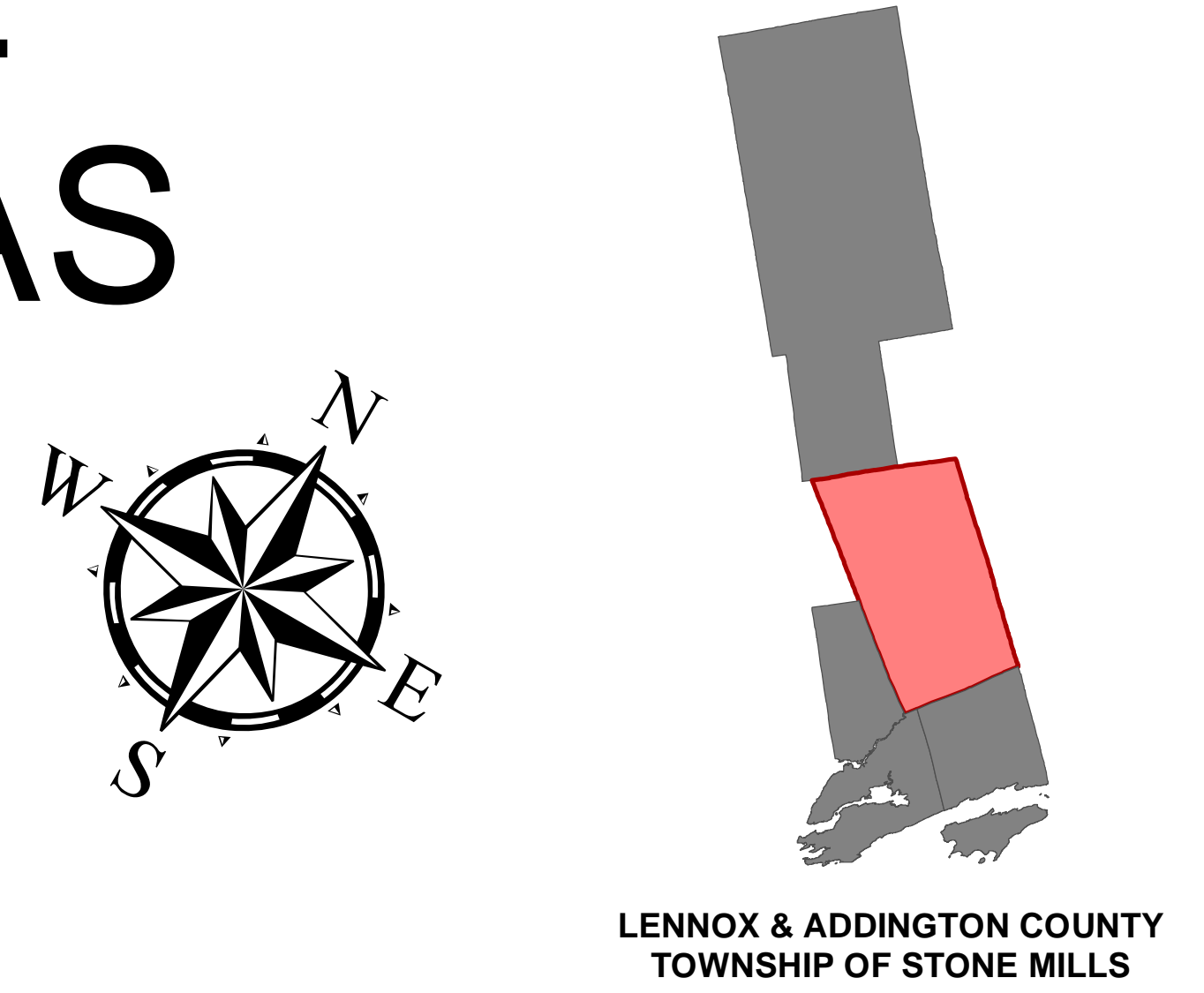




TOWNSHIP OF STONE MILLS OFFICIAL PLAN - SCHEDULE B

ENVIRONMENTAL PROTECTION AREAS

KEY MAP



ENVIRONMENTAL PROTECTION AREAS

- PROVINCIAL SIGNIFICANT WETLANDS
- AREAS OF NATURAL AND SCIENTIFIC INTEREST**
 - Earth Science ANSI
 - Life Science ANSI

ENVIRONMENTAL SENSITIVE AREAS

- LOCALLY SIGNIFICANT WETLANDS
- WOODLANDS
- DEER WINTERING YARDS
- LAKE TROUT LAKES
- NESTING SITES

INFRASTRUCTURE

COUNTY ROADS

- Rural Arterial
- Rural Collector
- Urban Collector

TOWNSHIP ROADS

- Major Township
- Local Township

OTHER ROADS

- Private Road
- Railways
- Utility Lines

RECREATION TRAILS

- Multi Use
- Multi Use NoATV

OTHER FEATURES

- CANADIAN SHIELD BOUNDARY
- HAMLET
- PROVINCIAL PARKS
- CONSERVATION RESERVES
- CONSERVATION AREA
- AGREEMENT FORESTS
- CROWN LAND

Schedule Approved: _____



SCALE 1 : 45,000
When plotted at 34" x 44" (ANSI E)

Notes
1. Community Improvement Areas coincide with the Hamlet boundaries illustrated on this schedule.
2. Where other documents have been used to depict information shown on this schedule, reference shall be made to the original document where a more accurate interpretation is required.
3. Flood elevations for the Salmon River and Napawee River have been plotted using flood plain mapping provided by the Quinte Conservation Authority.

Produced By: James Gibson
Produced Using: Arc GIS 10.5
Date Produced: January 2018
Schedule produced under the guidance of the Township of Stone Mills and IBI Group.

Aggregate Reserve ©Queen's Printer for Ontario, 2007. Reproduced with permission.
AMIS Points, Ontario Geological Survey. ©Queen's Printer for Ontario, 2007. Reproduced with permission.
Bedrock Resource ©Queen's Printer for Ontario, 2007. Reproduced with permission.
Communication Towers ©Queen's Printer for Ontario, 2007. Reproduced with permission.
Hazardous Lands ©Quinte Conservation Authority, 2007. Reproduced with permission.
Inactive Waste Disposal Sites ©Queen's Printer for Ontario, 1991. Reproduced with permission.
Lands and Concessions ©Queen's Printer for Ontario, 2007. Reproduced with permission.
Licensed Pits & Quarries ©Queen's Printer for Ontario, 2007. Reproduced with permission.
Ontario Road Network ©Queen's Printer for Ontario, 2007. Reproduced with permission.
Percambrian Limestone Divide ©Quinte Conservation Authority, 2007. Reproduced with permission.
Mineral Resources ©Queen's Printer for Ontario, 2007. Reproduced with permission.
Ontario Road Network ©Queen's Printer for Ontario, 2007. Reproduced with permission.
Percambrian Limestone Divide ©Quinte Conservation Authority, 2007. Reproduced with permission.
Railways ©Queen's Printer for Ontario, 2007. Reproduced with permission.
Recreation Trails ©Queen's Printer for Ontario, 2007. Reproduced with permission.
Utility Lines ©Queen's Printer for Ontario, 2007. Reproduced with permission.

