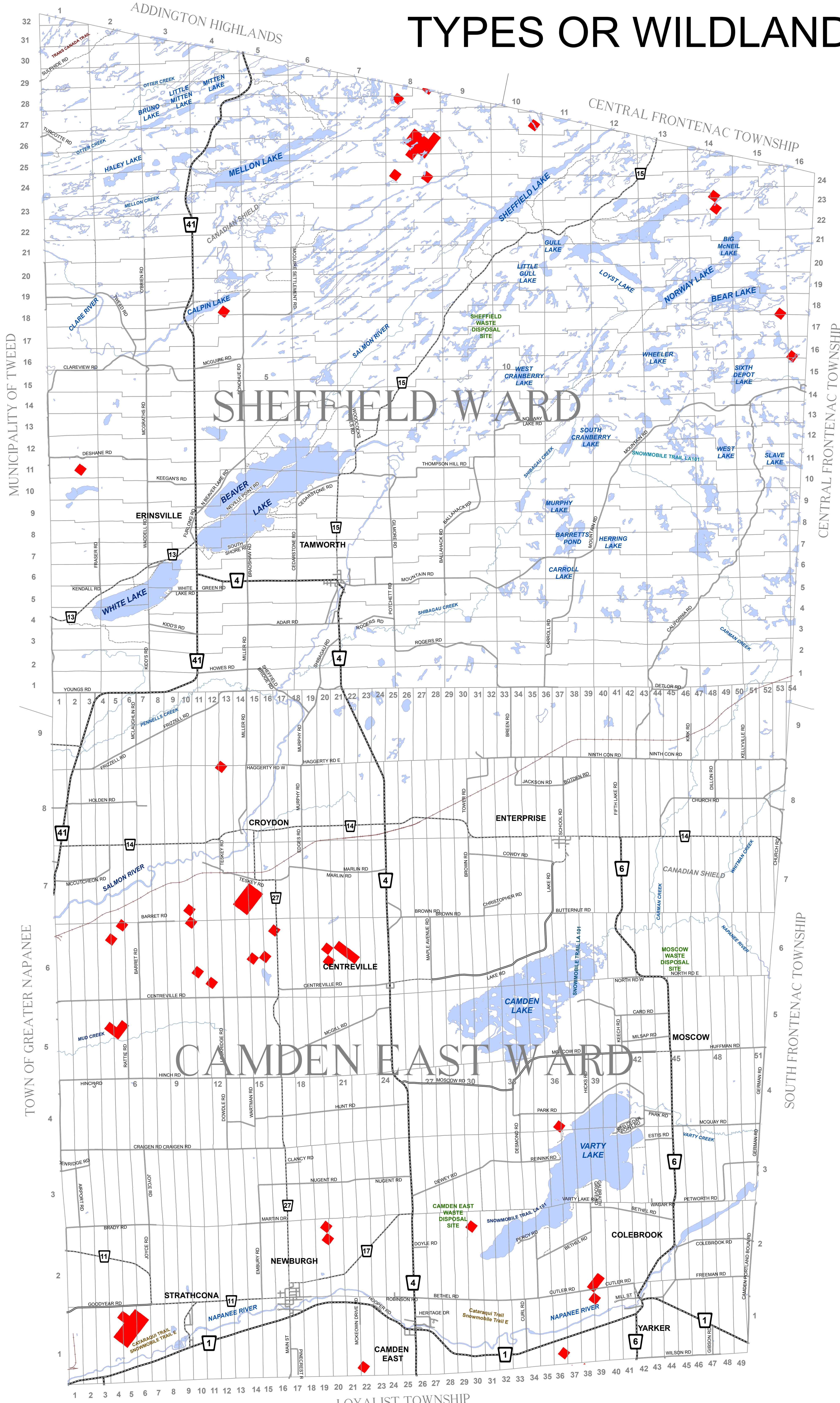
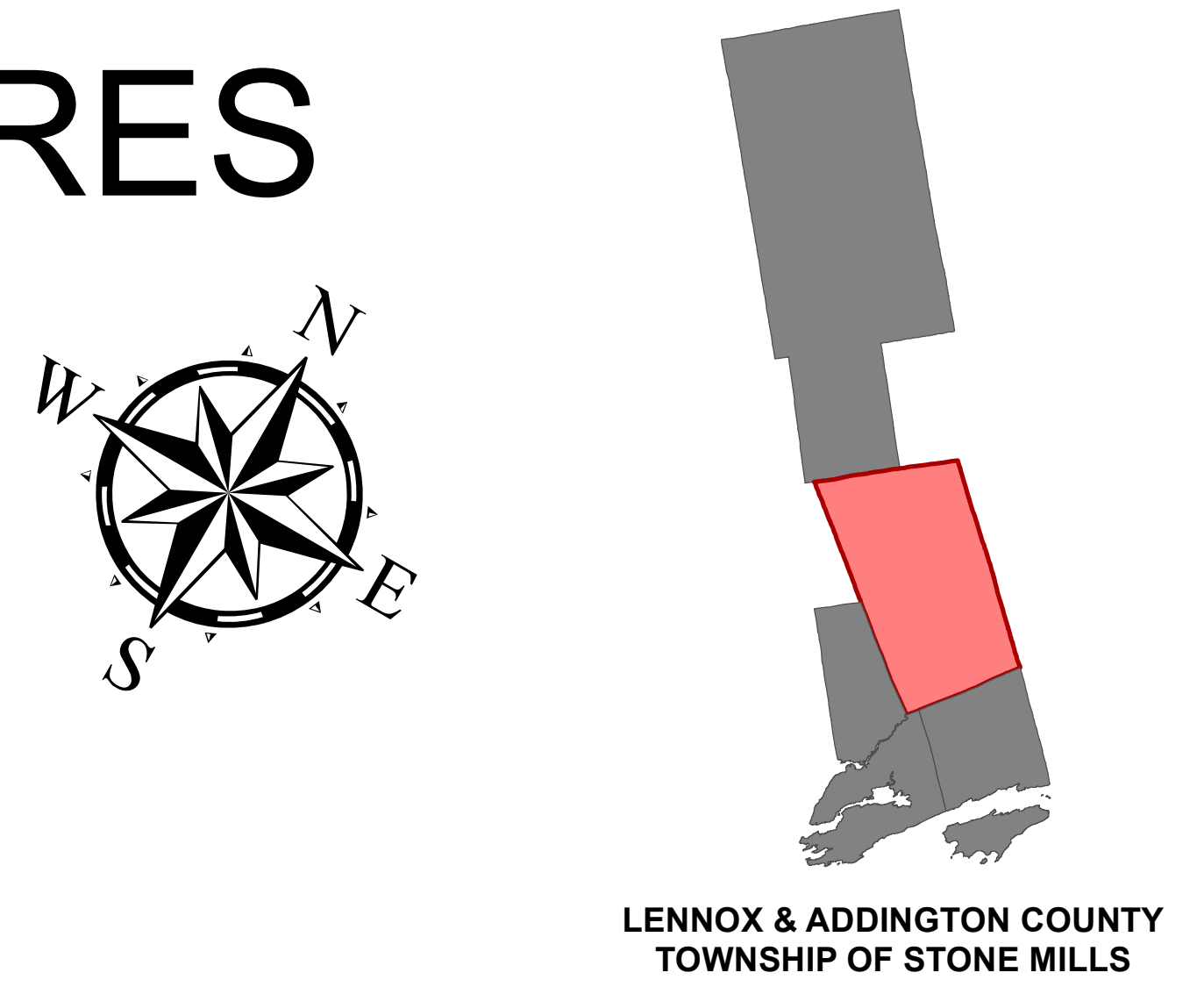




TOWNSHIP OF STONE MILLS OFFICIAL PLAN - APPENDIX A

POTENTIAL HAZARDOUS FUEL TYPES OR WILDLAND FIRES

KEY MAP



Legend

Potential Hazardous Fuel Types for Wildland Fires

- Extreme - C1, C2, C4
- High - C3, M2>50%, M4

Schedule Approved: _____

2 1 0 2 4 6 8 10 Kilometres

SCALE 1 : 45,000
When plotted at 34" x 44" (ANSI E)

Notes
 1. Community Improvement Areas coincide with the Hamlet boundaries illustrated on this schedule.
 2. Where other documents have been used to depict information shown on this schedule, reference shall be made to the original document where a more accurate interpretation is required.
 3. Flood elevations for the Salmon River and Napanee River have been plotted using flood plain mapping provided by the Quinte Conservation Authority.

Aggregate Reserve ©Queen's Printer for Ontario, 2007. Reproduced with permission.
 AHS Points, Ontario Geological Survey. ©Queen's Printer for Ontario, 2007. Reproduced with permission.
 Bedrock Resource ©Queen's Printer for Ontario, 2007. Reproduced with permission.
 Communication Towers ©Queen's Printer for Ontario, 2007. Reproduced with permission.
 Hazardous Lands ©Quinte Conservation Authority, 2007. Reproduced with permission.
 Inactive Waste Disposal Sites ©Queen's Printer for Ontario, 1991. Reproduced with permission.
 Licensed Pits & Quarries ©Queen's Printer for Ontario, 2007. Reproduced with permission.
 Lots and Concessions ©Queen's Printer for Ontario, 2007. Reproduced with permission.
 Mineral Resources ©Queen's Printer for Ontario, 2007. Reproduced with permission.
 Ontario Road Network ©Queen's Printer for Ontario, 2007. Reproduced with permission.
 Percambrian Limestone Divide ©Quinte Conservation Authority, 2007. Reproduced with permission.
 Railways ©Queen's Printer for Ontario, 2007. Reproduced with permission.
 Recreation Trails ©Queen's Printer for Ontario, 2007. Reproduced with permission.
 Utility Lines ©Queen's Printer for Ontario, 2007. Reproduced with permission.

Produce By: James Gibson
 Produced Using: Arc GIS 10.5
 Date Produced: September 2018
 Schedule produced under the guidance of the Township of Stone Mills and IBI Group.